



Rotary Airlocks





In industry, you can only work when your equipment does.  
*Why spend money on equipment that will let you down?*  
Discover why many consider us the most reliable airlock in the industry.

**Quality. Precision. Dependability.**  
That's Progressive Valves.

#### **Construction**

Cast Iron. Heavy Duty. Solid.

#### **Drive Motors**

Emerson

Baldor

Leeson

WEG

You spec it. We use it.

#### **Tight Tolerances**

Not just a feeder- an airlock. To maximize the life of the valve and hold pressure differential, every rotor is custom machined to fit at the tightest tolerances possible for a given airlock size, valve configuration, and specific application. (Our smallest valve - 8" - has .004"-.005" end clearances and .003"-.005" diameter clearances). Every cast airlock we make is designed to hold **at least** a 20 psi pressure differential.

#### **Lots of Extras**

- Three-sided rotor relief. Less drag. Better revolution accuracy. Less wear.
- Outboard bearings - keep bearings free of material
- Maintenance-free seals - no fuss, no re-tightening
- Squeeze Lock bearings for super easy service
- Oversized rotor shaft to prevent twisting
- Air-purge ready. Add an air purge. Keep material out of seals. Prevent lock-ups.
- Teflon Seal (option). Extra long life. Good with sticky products.

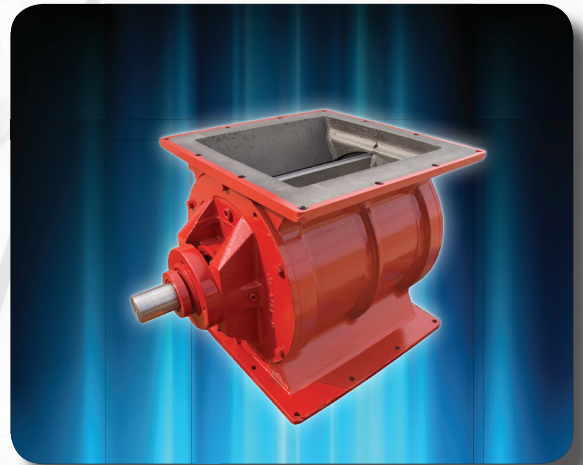
#### **Made in USA**

Designed, cast, machined, and assembled in the USA. Proudly employing your friends & neighbors.

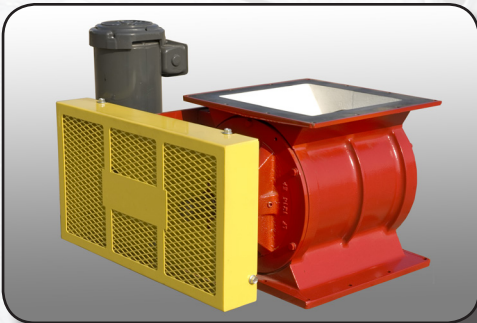


# Standard Valve Configurations

**A.1 - Standard Construction -**  
cast iron housing, CS open end rotor, relieved tip rotors.



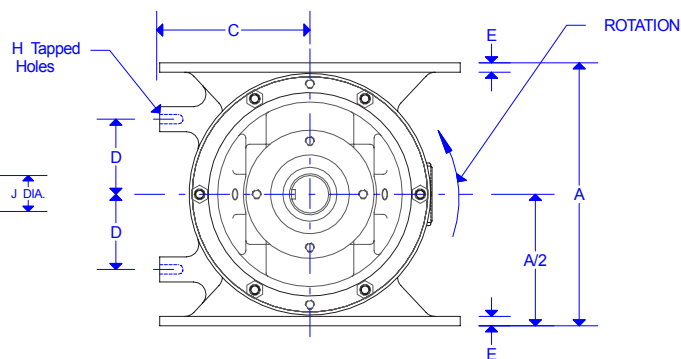
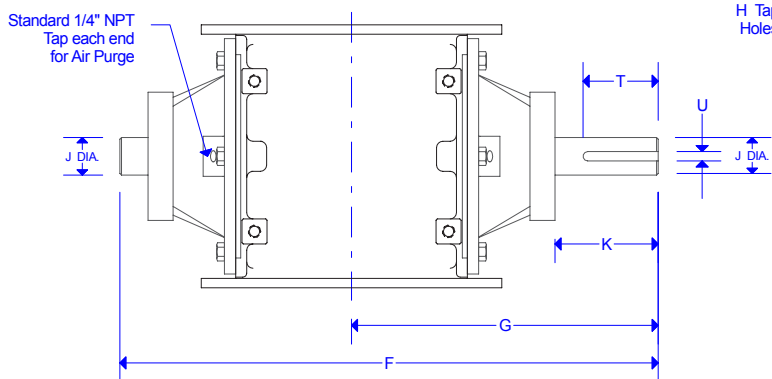
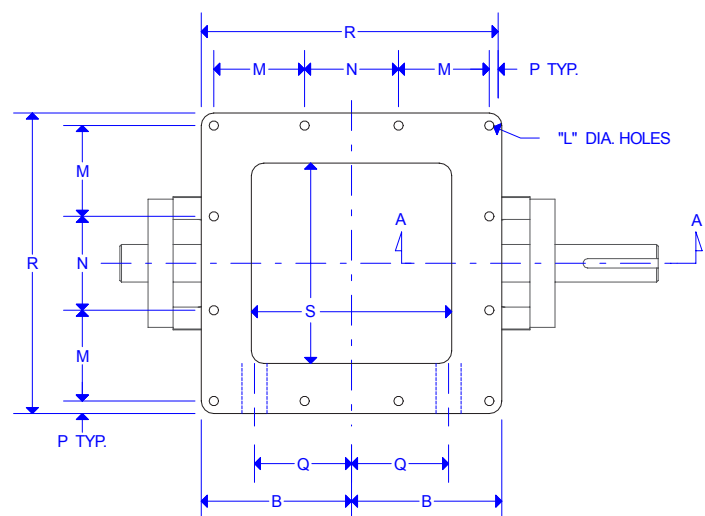
**B.1 - Mildly Abrasive Service -**  
cast iron housing, hard chrome plated interior, CS open end rotor with replaceable, abrasion resistant, relieved tips.



**C.1 - Corrosion Resistant Service -**  
cast iron housing, hard chrome plated interior, epoxy coated inlet and outlet throats, 304SS open end rotor, relieved tips.

**D.1 - Moderate Abrasive Service -**  
cast iron housing, hard chrome plated interior, CS closed end rotor with replaceable, abrasion resistant, relieved tips. Includes tapping for endplate purge.

# SD Airlocks



All Dimensions in IN.

MODEL	CFR
SD-20	.20
SD-40	.40
SD-75	.75

Dimensions shown are for an SD valve without a drive assembly.

A	B	C	D	E	F	G	H	J	K	L	M	N	P	Q	R
10 <sup>1</sup> / <sub>2</sub>	6	6	3	<sup>3</sup> / <sub>8</sub>	21 <sup>1</sup> / <sub>2</sub>	12 <sup>1</sup> / <sub>2</sub>	(4) <sup>3</sup> / <sub>8</sub>	1 <sup>1</sup> / <sub>2</sub>	3 <sup>3</sup> / <sub>16</sub>	<sup>3</sup> / <sub>8</sub>	3 <sup>5</sup> / <sub>8</sub>	3 <sup>3</sup> / <sub>4</sub>	<sup>1</sup> / <sub>2</sub>	3 <sup>7</sup> / <sub>8</sub>	12
12 <sup>3</sup> / <sub>4</sub>	7 <sup>3</sup> / <sub>8</sub>	7 <sup>3</sup> / <sub>8</sub>	4	<sup>3</sup> / <sub>8</sub>	22 <sup>13</sup> / <sub>16</sub>	12 <sup>7</sup> / <sub>8</sub>	(4) <sup>3</sup> / <sub>8</sub>	1 <sup>1</sup> / <sub>2</sub>	3 <sup>1</sup> / <sub>4</sub>	<sup>7</sup> / <sub>16</sub>	4 <sup>1</sup> / <sub>4</sub>	4 <sup>1</sup> / <sub>4</sub>	1	4 <sup>3</sup> / <sub>4</sub>	14 <sup>3</sup> / <sub>4</sub>
15 <sup>3</sup> / <sub>4</sub>	8 <sup>1</sup> / <sub>2</sub>	8 <sup>1</sup> / <sub>2</sub>	5 <sup>1</sup> / <sub>2</sub>	<sup>1</sup> / <sub>2</sub>	25 <sup>9</sup> / <sub>16</sub>	14 <sup>1</sup> / <sub>8</sub>	(6) <sup>3</sup> / <sub>8</sub> -16	1 <sup>15</sup> / <sub>16</sub>	3 <sup>1</sup> / <sub>4</sub>	<sup>7</sup> / <sub>16</sub>	5 <sup>1</sup> / <sub>4</sub>	5 <sup>1</sup> / <sub>4</sub>	<sup>5</sup> / <sub>8</sub>	5 <sup>1</sup> / <sub>2</sub>	17

T	U	C
10 <sup>1</sup> / <sub>2</sub>	6	6
12 <sup>3</sup> / <sub>4</sub>	7 <sup>3</sup> / <sub>8</sub>	7 <sup>3</sup> / <sub>8</sub>
15 <sup>3</sup> / <sub>4</sub>	8 <sup>1</sup> / <sub>2</sub>	8 <sup>1</sup> / <sub>2</sub>



# Rotary Airlocks

## Options

- 10 Vane Rotor
- Air Purge
- Closed End Rotor
- Hard Chrome Plating
- High Heat Configuration
- Reduced Capacity Rotor
- Replaceable Rotor Tips
- Split Vane Rotor
- SS Rotor
- Sugar/Phosphate Configuration
- Teflon Coating
- Teflon Seal (T-Seal)

## Accessories

- Blow-Thru Adapter
- Maintenance Gate
- Shear Protector
- Square to Round Adapters
- Surge Hopper